

NUVICO EasyView™

Indoor Color Dome Cameras

CD-SD Series / 550 TV Lines • Day/Night

Patent Pending



Flush Housing with Surface Mount Plate



Flush Mount Housing



Wall Mount

Key Features

- 1/3" CCD Sensor
- High Resolution - 550 TV Lines(Color), 600 TV Lines(B/W)
- Day/Night Function with ICR
- 0.1 Lux(Color), 0.03 Lux(B/W)
- 36 IR LED Module (Option)
- Separate Camera Control Board
 - Dip Switches
 - DC Level Button
 - Service Monitor Output
- 12VDC/24VAC Dual Voltage

Lens Options

- 2.6~6mm, DC Auto Iris
- 3.8~9.5mm, DC Auto Iris
- 9~22mm, DC Auto Iris

Construction

- 4" Polycarbonate Bubble
- 3-Axis Gimbal
- Flush Mount Housing w/ Surface Mount Plate in a single package
- Ivory or Black Plastic Housing Options
- Aluminum Wall Mount (Option)
- Compact Size

3-Axis Gimbal

Cover every angle !



Pan



Tilt



Horizontal Rotation



Tilted View with 2-Axis Bracket



Perfect View with 3-Axis Gimbal

Day/Night

See in the dark !



Color Mode



Clear B/W Mode

NUVICO INC.

53 Smith Street, Englewood, NJ 07631 USA
Phone 201-541-1605 Toll Free 866-523-1700 Fax 201-541-1620
sales@nuvico.com www.nuvico.com

NUVICO reserves the right to alter product offers and specification at any time without notice.
NUVICO EasyView and the NUVICO logo are registered trademarks of NUVICO.
© Copyright 2006, NUVICO. All rights reserved.

NUVICO®

Connecting Video Anywhere™

NUVICO EasyView™

Indoor Color Dome Cameras

CD-SD Series / 550 TV Lines • Day/Night

Available Models

- CD-SD266N/P-AI**
2.6~6mm Vari-focal Lens, 12VDC/24VAC, Ivory Housing
- CD-SD266N/P-AB**
2.6~6mm Vari-focal Lens, 12VDC/24VAC, Black Housing
- CD-SD3895N/P-AI**
3.8~9.5mm Vari-focal Lens, 12VDC/24VAC, Ivory Housing
- CD-SD3895N/P-AB**
3.8~9.5mm Vari-focal Lens, 12VDC/24VAC, Black Housing
- CD-SD922N/P-AI**
9~22mm Vari-focal Lens, 12VDC/24VAC, Ivory Housing
- CD-SD922N/P-AB**
9~22mm Vari-focal Lens, 12VDC/24VAC, Black Housing
- CD-SD3895N/P-AI-L**
3.8~9.5mm Vari-focal Lens, 36 LEDs, 12VDC/24VAC, Ivory Housing
- CD-SD3895N/P-AB-L**
3.8~9.5mm Vari-focal Lens, 36 LEDs, 12VDC/24VAC, Black Housing

Accessories

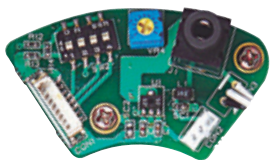
- CV-WM-I**
Wall Mount for EasyView Domes - Ivory
- CV-WM-B**
Wall Mount for EasyView Domes - Black
- CA-SMC30**
Service Monitor Cable for EasyView Domes

Specifications

Item	CD-SD Series	
Video Formats	NTSC	PAL
Image Sensor	1/3" CCD	
Sync System	Internal	
Scanning system	525 Lines, Interlaced	625 Lines, Interlaced
Electronic Shutter	1/60 ~ 1/100,000	1/50 ~ 1/100,000
Main Video Output	1.0 Vp-p Composite, 75 ohm	
Service Monitor Output	1.0 Vp-p Composite, 75 ohm	
Horizontal Resolution	550 TV Lines(Color), 600 TV Lines(B/W)	
Min. Illumination	0.1 Lux(Color), 0.03 Lux(B/W)	
S/N Ratio	48dB	
Day/Night Function	ICR	
36 IR LEDs (Option)	LED Distance: upto 100 ft.	
Lens Options (DC Auto Iris)	Vari-focal: 2.6~6mm, 3.8~9.5mm, 9~22mm	
Auto Iris Control	DC Level Button	
Camera Control & Setup	Dip Switches	
ICR Switch Time	2~3 sec. / 4~5 sec.	
Flickerless	On / Off	
BLC	On / Off	
Auto White Balance	ATW / AWB	
Operating Temperature	0°C ~ +45°C	
Operating Humidity	Within 90% RH	
Power Consumption	Camera - 500mA	
	LED Module - 500mA	
Power Requirement	12VDC/24VAC Dual Voltage	

Specifications are subject to change without any prior notice.

Easy Camera Setup



Camera Control Board is conveniently located at the base of Dome Housing. Service Monitor Output, DC Level Button and Dip Switches are easily accessible for quick camera setup.

Easy Gimbal Adjustment



Traditional Dome Insert has been fully integrated into the Gimbal for complete camera concealment. Uniquely designed Gimbal mechanism yields maximum lens rotation & placement (85° Tilt, 355° Pan), in quick and simple steps.

Easy Housing Installation

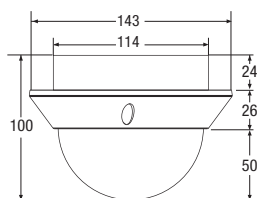
Flush Mount Surface Mount Plate



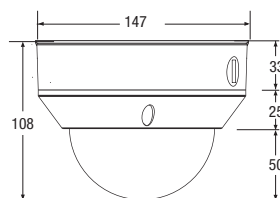
Either flush mounted or surface mounted, EasyView Dome Cameras have a number of pre-drilled mounting holes that accommodate various electrical junction boxes, making installation easy and less time consuming. Optional Wall Mount provides additional flexibility.

Dimensions (UNIT: mm)

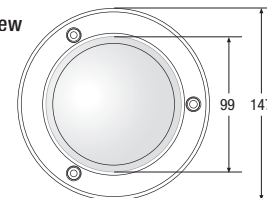
Flush Mount



Surface Mount



Top View



NUVICO INC.

53 Smith Street, Englewood, NJ 07631 USA
Phone 201-541-1605 Toll Free 866-523-1700 Fax 201-541-1620
sales@nuvico.com www.nuvico.com

NUVICO reserves the right to alter product offers and specification at any time without notice.
NUVICO EasyView and the NUVICO logo are registered trademarks of NUVICO.
© Copyright 2006, NUVICO. All rights reserved.

NUVICO®

Connecting Video Anywhere™