

# NUVICO EasyView™

## Vandalproof Color Dome Cameras

VANDALPROOF

WEATHERPROOF

### CV-SD Series / 550 TV Lines • Day/Night

Patent Pending



Flush Housing with Surface Mount Plate



Flush Mount Housing



Wall Mount

#### Key Features

- 1/3" CCD Sensor
- High Resolution - 550 TV Lines(Color), 600 TV Lines(B/W)
- Day/Night Function with ICR
- 0.1 Lux(Color), 0.03 Lux(B/W)
- 36 IR LED Module (Option)
- Separate Camera Control Board
  - Dip Switches
  - DC Level Button
  - Service Monitor Output
- 12VDC/24VAC Dual Voltage

#### Lens Options

- 2.6~6mm, DC Auto Iris
- 3.8~9.5mm, DC Auto Iris
- 9~22mm, DC Auto Iris

#### Construction

- 4" Polycarbonate Bubble
- 3-Axis Gimbal
- Flush Mount Housing w/ Surface Mount Plate in a single package
- Impact Resistant Dome w/ Aluminum Housing
- Aluminum Wall Mount (Option)
- Weatherproof - IP66
- Fan & Heater(Option)
- Compact Size

#### 3-Axis Gimbal

Cover every angle !



Pan



Tilt



Horizontal Rotation



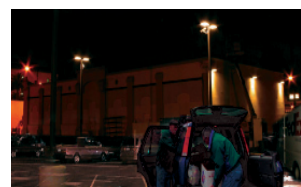
Tilted View with 2-Axis Bracket



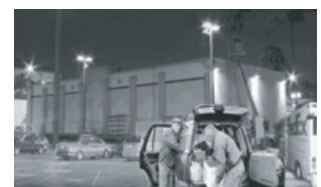
Perfect View with 3-Axis Gimbal

#### Day/Night

See in the dark !



Color Mode



Clear B/W Mode

#### NUVICO INC.

53 Smith Street, Englewood, NJ 07631 USA  
 Phone 201-541-1605 Toll Free 866-523-1700 Fax 201-541-1620  
 sales@nuvico.com [www.nuvico.com](http://www.nuvico.com)

NUVICO reserves the right to alter product offers and specification at any time without notice.  
 NUVICO EasyView and the NUVICO logo are registered trademarks of NUVICO.  
 © Copyright 2006, NUVICO. All rights reserved.

# NUVICO®

Connecting Video Anywhere™

# NUVICO EasyView™ Vandalproof Color Dome Cameras

**VANDALPROOF WEATHERPROOF**

## CV-SD Series / 550 TV Lines • Day/Night

### Available Models

#### CV-SD266N/P-AI

2.6~6mm Vari-focal Lens, 12VDC/24VAC, Ivory Housing

#### CV-SD3895N/P-AI

3.8~9.5mm Vari-focal Lens, 12VDC/24VAC, Ivory Housing

#### CV-SD922N/P-AI

9~22mm Vari-focal Lens, 12VDC/24VAC, Ivory Housing

#### CV-SD3895N/P-AI-L

3.8~9.5mm Vari-focal Lens, 36 LEDs, 12VDC/24VAC, Ivory Housing

### Accessories

#### CV-WM-I

Wall Mount for EasyView Domes - Ivory

#### CV-FH-V

Fan & Heater for EasyView Vandalproof Domes

#### CA-SMC30

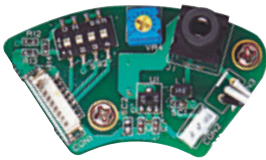
Service Monitor Cable for EasyView Domes

### Specifications

Item	CV-SD Series	
Video Formats	NTSC	PAL
Image Sensor	1/3" CCD	
Sync System	Internal	
Scanning system	525 Lines, Interlaced	625 Lines, Interlaced
Electronic Shutter	1/60 ~ 1/100,000	1/50 ~ 1/100,000
Main Video Output	1.0 Vp-p Composite, 75 ohm	
Service Monitor Output	1.0 Vp-p Composite, 75 ohm	
Horizontal Resolution	550 TV Lines(Color), 600 TV Lines(B/W)	
Min. Illumination	0.1 Lux(Color), 0.03 Lux(B/W)	
S/N Ratio	48dB	
Day/Night Function	ICR	
36 IR LEDs (Option)	LED Distance: upto 100 ft.	
Lens Options (DC Auto Iris)	Vari-focal: 2.6~6mm, 3.8~9.5mm, 9~22mm	
Auto Iris Control	DC Level Button	
Camera Control & Setup	Dip Switches	
ICR Switch Time	2~3 sec. / 4~5 sec.	
Flickerless	On / Off	
BLC	On / Off	
Auto White Balance	ATW / AWB	
Operating Temperature	0°C ~ +45°C (Normal) -25°C ~ +60°C (w/ Fan & Heater)	
Operating Humidity	Within 90% RH	
Weatherproof	IP66	
Power Consumption	Camera - 500mA LED Module - 500mA Fan & Heater - 20VA(24VAC Only)	
Power Requirement	12VDC/24VAC Dual Voltage	

Specifications are subject to change without any prior notice.

### Easy Camera Setup



Camera Control Board is conveniently located at the base of Dome Housing. Service Monitor Output, DC Level Button and Dip Switches are easily accessible for quick camera setup.

### Easy Gimbal Adjustment



Traditional Dome Insert has been fully integrated into the Gimbal for complete camera concealment. Uniquely designed Gimbal mechanism yields maximum lens rotation & placement (85° Tilt, 355° Pan), in quick and simple steps.

### Easy Housing Installation

Flush Mount

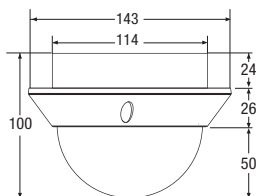
Surface Mount Plate



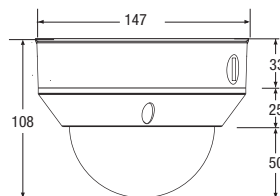
Either flush mounted or surface mounted, EasyView Dome Cameras have a number of pre-drilled mounting holes that accommodate various electrical junction boxes, making installation easy and less time consuming. Optional Wall Mount provides additional flexibility.

### Dimensions (UNIT: mm)

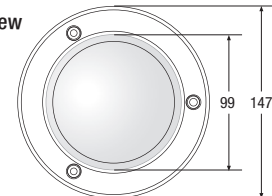
Flush Mount



Surface Mount



Top View



### NUVICO INC.

53 Smith Street, Englewood, NJ 07631 USA  
Phone 201-541-1605 Toll Free 866-523-1700 Fax 201-541-1620  
sales@nuvico.com [www.nuvico.com](http://www.nuvico.com)

NUVICO reserves the right to alter product offers and specification at any time without notice.  
NUVICO EasyView and the NUVICO logo are registered trademarks of NUVICO.  
© Copyright 2006, NUVICO. All rights reserved.

# NUVICO®

Connecting Video Anywhere™